



David Geffen  
School of Medicine

Office of Continuing Medical Education, David Geffen School of Medicine at UCLA

In conjunction with

the Animal Medical Center, New York and

The Wildlife Conservation Society

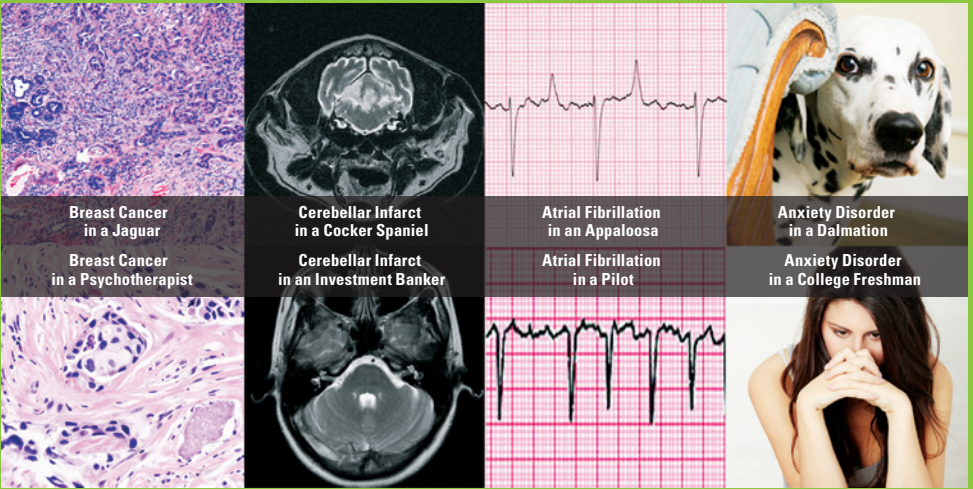
Present

# ZOOBIQUITY **CONFERENCE** 3

**A Species-Spanning Approach to Medicine**

**NEW YORK**

**Saturday, November 2, 2013**



**A conversation between physicians and veterinarians  
caring for the same diseases in different species**

**The Rockefeller University, Caspary Auditorium  
and the Bronx Zoo**



DAVID GEFFEN SCHOOL OF MEDICINE at UCLA



---

## Course Description

Comparative medicine once occupied a primary position in medical thought and education. Today, although the spectrum of clinical illness in humans and non-human animals overlaps tremendously, human and veterinary clinicians often operate in largely separate professional silos. The professions come together episodically around concerns such as emerging infectious diseases, zoonoses, and food safety. However, the connections between human and veterinary health and clinical practice extend far beyond these issues—a reality well known to veterinarians but less recognized by physicians.

One step to facilitate understanding of the global and species-spanning nature of illness and health is to facilitate introductions and engagement between clinicians and researchers on both sides of this “species-divide.”

The 3rd Zoobiquity Conference is sponsored by the Animal Medical Center, New York, the Wildlife Conservation Society and the David Geffen School of Medicine at UCLA. The conference is designed to bring together leading clinicians and scientists in both human and veterinary medicine to discuss the same diseases in a wide spectrum of animal species, including people.

The intention of this cross-disciplinary conference is to create conversations and relationships between human and veterinary colleagues confronted with similar clinical challenges. By crossing disciplines in this manner, we can significantly expand the perspective of clinicians, scientists and patients about these shared disorders and broader health concerns.

The morning will begin at The Rockefeller University where veterinarians and physicians will discuss cases in the areas of oncology, psychiatry/behavior, infectious disease and neurodegenerative/neurological diseases.

Following the morning program, conference participants will board buses and travel to the Bronx Zoo to participate in “Walk Rounds” which will be led by the Wildlife Conservation Society’s Zoological Health Program staff. The afternoon session will feature several fascinating veterinary cases with important comparative elements relevant to human clinical care. A cocktail reception at the Bronx Zoo’s Schiff Family Great Hall will conclude the conference and participants will board buses back to The Rockefeller University.

---

## Target Audience

This course is targeted to clinicians and scientists in the fields of medicine, veterinary medicine, evolutionary biology, public health, psychology and others.

---

## Goals and Objectives

The goal of the conference is to facilitate understanding of the global and species-spanning nature of health. Our intent is that this conference provides a structure and program through which relationships can develop bridges across the “species divide” and from which a broader understanding of disease may emerge.

**We hope that the development of these relationships around shared clinical challenges will lead to:**

- Broader consideration of the epidemiology of disease (with implications for shared environmental triggers/exposures);
- Potential for new approaches to the diagnosis and treatment of disease in both animals and humans;
- New collaborations and novel hypotheses for investigation and
- Greater appreciation for the shared biology and pathophysiology of humans and animals.

By extension, this points to the shared vulnerability of many species (including humans) to the same basic health threats—a message which speaks directly to the need for a global and species-spanning approach.

# Faculty

---

## Conference Chairs

### **Paul P. Calle, VMD, DACZM**

Chief Veterinarian and Director of the Zoological Health Program, Wildlife Conservation Society  
President, American Association of Zoo Veterinarians

### **Richard E. Goldstein, DVM, DACVIM (SAIM), DECVIM-CA**

Chief Medical Officer  
The Animal Medical Center, New York

### **Barbara Natterson-Horowitz, MD**

Professor of Medicine, UCLA Division of Cardiology  
Director, Zoobiquity Research Initiative  
David Geffen School of Medicine at UCLA

---

## The Animal Medical Center, New York

### **Nicole Leibman, DVM, MS, DACVIM (Oncology)**

Chief of Oncology

### **Chad West, DVM, DACVIM (Neurology)**

Chief of Neurology

---

## Wildlife Conservation Society

### **Meredith M. Clancy, DVM**

Resident in Zoological Medicine & Surgery

### **Kenneth J. Conley, DVM, DACVP**

Associate Pathologist

### **D McAloose, VMD, DACVP**

Head, Department of Pathology

### **Robert P. Moore, PE, DVM, DABVP**

Associate Veterinarian

### **Jean A. Paré, DMV, DVSc, DACZM**

Associate Veterinarian

### **Bonnie L. Raphael, DVM, DACZM**

Head, Clinical Department

### **Tracie Seimon, PhD**

Molecular Scientist

### **John M. Sykes, IV, DVM, DACZM**

Associate Veterinarian

---

## Featured Faculty

### **Evelyn Attia, MD**

Clinical Professor of Psychiatry  
Director, Eating Disorders Research Program  
New York State Psychiatric Institute  
Director, Columbia Center for Eating Disorders  
Columbia University Medical Center

### **E'Lise Christensen, DVM, DACVB**

NYC Veterinary Specialists

### **Joan Coates, DVM, MS, DACVIM (Neurology)**

University of Missouri, College of Veterinary Medicine

### **Orrin Devinsky, MD**

Director, Comprehensive Epilepsy Center  
Professor of Neurology, Neurosurgery and Psychiatry  
NYU Langone Medical Center and School of Medicine

### **Brian Fallon, MD**

Professor of Clinical Psychiatry  
Director, Lyme and Tick-Borne Diseases Research Center  
Director, Center for the Study of Neuroinflammatory Disorders & Biobehavioral Medicine  
Columbia University

### **Harvey V. Fineberg, MD, PhD**

President  
Institute of Medicine

### **Lisa Freeman, DVM, PhD, DACVN**

Professor  
Department of Clinical Sciences, Nutrition Cummings School of Veterinary Medicine  
Tufts University

### **Richard Friedman, MD**

Professor of Clinical Psychiatry  
Director of the Psychopharmacology Clinic  
Weill Cornell Medical College

### **Robert J. Kaner, MD**

Associate Professor of Clinical Medicine and Genetic Medicine  
Division of Pulmonary and Critical Care Medicine  
Weill Cornell Medical College

### **Dale Lange, MD**

Chair of Neurology and Neurologist-in-Chief  
Hospital for Special Surgery  
Professor of Neurology  
Weill Cornell Medical College  
President, New York State Neurological Society

### **Jay Lemery, MD**

Assistant Professor of Emergency Medicine  
University of Colorado  
President, Wilderness Medical Society

### **Alice C. Levine, MD**

Professor of Medicine, Endocrinology, Diabetes and Bone Disease  
Associate Professor of Oncological Sciences  
Mount Sinai School of Medicine

### **Ralph Nixon, MD, PhD**

Professor of Psychiatry  
Director of Center of Excellence for Brain Aging  
Executive Director of The Pearl Barlow Center for Memory Evaluation and Treatment  
NYU Langone Medical Center

### **Larry Norton, MD**

Deputy Physician-in-Chief for Breast Cancer Programs  
Medical Director, Evelyn H. Lauder Breast Center  
Norma S. Sarofim Chair in Clinical Oncology  
Memorial Sloan-Kettering Cancer Center

### **Elaine Ostrander, PhD**

Chief & NIH Distinguished Investigator  
Cancer Genetic Branch  
National Human Genome Research Institute  
National Institutes of Health

### **Claire Panosian, MD, FIDSA, DTM&H (London)**

Professor of Medicine  
Division of Infectious Diseases  
David Geffen School of Medicine at UCLA

# Program Schedule

## Saturday, November 2, 2013

**7:00 am** Registration / Continental Breakfast / Poster Session

**7:30 am** **Welcome Remarks**

Barbara Natterson-Horowitz, MD

Richard E. Goldstein, DVM, DACVIM (SAIM), DECVIM-CA

Paul P. Calle, VMD, DACZM

**8:00 am** **Keynote: Both Ends of the Leash—The Human Links to Good Dogs with Bad Genes (tentative title)**

Elaine Ostrander, PhD

*Note: The cases below for the selected diseases are only samples. Actual cases to be determined.*

### Oncology

**8:30 am** **Invasive Breast Cancer in an 8-Year-Old Golden Retriever, 19-Year-Old Amur Tiger and 57-Year-Old Psychotherapist**

Nicole Leibman, DVM, MS, DACVIM (Oncology)

D McAloose, VMD, DACVP

Larry Norton, MD

**9:00 am** **Questions and Answers**

### Psychiatry/Behavioral

**9:15 am** **Anxiety Disorder in a 2-Year-Old Yorkshire Terrier and 21-Year-Old Barista**

E'Lise Christensen, DVM, DACVB

Richard A. Friedman, MD

**Eating Disorder (Self-Induced Vomiting) in a 15-Year-Old Beluga Whale and 19-Year-Old Collegiate Gymnast**

Lisa Freeman, DVM, PhD, DACVN

Evelyn Attia, MD

**10:15 am** **Questions and Answers**

**10:30 am** Break

**Poster Session**

### Infectious Disease

**10:45 am** **Lyme Disease in a 6-Year-Old Bull Terrier and 41-Year-Old Tax Attorney**

Richard E. Goldstein, DVM, DACVIM (SAIM), DECVIM-CA

Brian Fallon, MD

**11:15 am** **Questions and Answers**

### Neurodegenerative and Cognitive Disorders

**11:30 am** **Canine Cognitive Dysfunction in an 11-Year-Old French Poodle and Alzheimer's Disease in a 63-Year-Old Literature Professor**

Chad West, DVM, DACVIM (Neurology)

Ralph Nixon, MD

## Program Schedule (continued)

### **Degenerative Myelopathy in a 10-Year-Old Boxer and ALS in a 44-Year-Old Lacrosse Coach**

Joan Coates, DVM, MS, DACVIM (Neurology)

Dale Lange, MD

**12:30 pm Questions and Answers**

**12:45 pm BOARD BUSES AND DEPART FOR BRONX ZOO**

(boxed lunch provided)

### Bronx Zoo

**2:30–  
4:30 pm “Walk Rounds” at the Zoo**

#### **Seizure Disorder in an Aged Male Gorilla**

Bonnie L. Raphael, DVM, DACZM

Orrin Devinsky, MD

#### **Environmental Change and Amphibian Health**

Tracie Seimon, PhD

Jay Lemery, MD

#### **Pica in a California Sea Lion**

John M. Sykes, IV, DVM, DACZM

Evelyn Attia, MD

#### **Malaria in Penguins and People**

Jean A. Paré, DMV, DVSc, DACZM

Claire Panosian, MD, FIDSA, DTM&H (London)

#### **Gait Disturbance and Spinal Cord Lesions in a Siberian Tiger**

Kenneth J. Conley, DVM, DACVP

Dale Lange, MD

#### **Immunodeficiency and Respiratory Fungal Infections in Pheasants and Humans**

Robert P. Moore, PE, DVM, DABVP

Robery J. Kaner, MD

#### **Feminizing and Virilizing Tumors of Domestic Ferrets**

Meredith M. Clancy, DVM

Alice C. Levine, MD

#### **Tour of the Bronx Zoo’s Wildlife Health Center**

WCS Veterinarians and Staff

**4:30 pm Closing Remarks**  
Harvey V. Fineberg, MD, PhD

**5:00 pm Cocktail Reception**

**6:15 or  
7:00 pm Board Buses Back to The Rockefeller University**

### Program Organizers

## General Information

### Fee

#### Early-Bird Registration before September 6, 2013

\$285, Early-Bird Regular

\$140, Early-Bird Students (ID required)

*Early registration is recommended as space is limited.*

#### Registration on and after September 6, 2013

\$300, Regular

\$165, Students (ID required)

*Seats are limited. On-site registration available only if seats are available. Call (310) 794-2620 for more information.*

### Conference Location

#### Morning Session

The Rockefeller University

Caspary Auditorium

1230 York Avenue

New York, NY 10065

Phone: (212) 327-8000

#### Afternoon Session

(transportation provided)

Bronx Zoo

2300 Southern Blvd

Bronx, NY 10460

(718) 220-5100

## Enrollment

### Online

Go to [www.cme.ucla.edu/courses](http://www.cme.ucla.edu/courses), click on Zoobiquity, and click the registration button. You may use your MasterCard, VISA, American Express or Discover card to register online.

### By Mail

Use the form attached. Mail to the UCLA Office of Continuing Medical Education, David Geffen School of Medicine at UCLA, Zoobiquity, 10920 Wilshire Blvd., Suite 1060, Los Angeles, CA 90024-6512.

### By FAX

Send the completed enrollment form with credit card information and authorizing signature.  
FAX (310) 794-2624.

### By Phone

Use your MasterCard, VISA, AMEX or Discover Card. Call 310-794-2620.

For questions email: [eayala@mednet.ucla.edu](mailto:eayala@mednet.ucla.edu). Please visit our website for other UCLA CME offerings: [www.cme.ucla.edu](http://www.cme.ucla.edu)

### Directions & Parking

The Rockefeller University shares the intersection of York Avenue and East 68th Street with Memorial Sloan-Kettering Cancer Center and New York-Presbyterian Hospital/ Weill Medical College of Cornell University. The university's main entrance is at 1230 York Avenue (at East 66th Street) on Manhattan's Upper East Side.

### Public Transportation

Buses: Two buses stop near the main entrance: the York Avenue/ 57th Street crosstown (M31) and the 68th Street crosstown (M66).

Subway: Take the Lexington Avenue Local (No. 6) to the 68th Street and Lexington Avenue Station and walk east.

By Car: Take the FDR Drive to the 61st Street exit (Northbound) or the 63rd Street exit (Southbound) and follow York Avenue to one of the parking garages listed below.

### Parking

Greenberg Garage at New York-Presbyterian Hospital 212-746-1886 (entrance at 68th Street, east of York Avenue, \$38.00/day).

Quick Park at 450 E. 63rd Street (between York and 1st Avenue, \$23.70/day).

### Refunds

Cancellations must be received in writing by Friday, October 4, 2013 and will be subject to a \$50 processing fee. No refunds will be granted after that date. If, for any reason, the course must be canceled, discontinued, or rescheduled by the Office of Continuing Medical Education, a full refund will be provided.

### Additional Information

If you have any questions, please contact the UCLA Office of Continuing Medical Education at (310) 794-2620.

### Accreditation

The Office of Continuing Medical Education, David Geffen School of Medicine at UCLA is accredited by the Accreditation Council for Continuing Medical Education to provide continuing medical education for physicians. The Office of Continuing Medical Education, David Geffen School of Medicine at UCLA designates this live activity for a maximum of 7.5 AMA PRA Category 1 Credits™. Physicians should claim only the credit commensurate with the extent of their participation in the activity.

This program has applied for RACE Continuing Education Credits. Approval is pending.

The Animal Medical Center (AAVSB RACE Provider # 429) is accredited by the American Association of Veterinary State Boards (AAVSB) to sponsor Registry of Approved Continuing Education (RACE) courses for veterinary practitioners. This program has been submitted (but not yet approved) for AAVSB RACE hours pending of continuing education credit in jurisdictions which recognize AAVSB RACE approval; however participants should be aware that some boards have limitations on the number of hours accepted in certain categories and/or restrictions on certain methods of delivery of continuing education.

### Disclosure Statement

The FDA has issued a concept paper which classifies commercial support of scientific and educational programs as promotional unless it can be affirmed that the program is "truly independent" and free of commercial influence. In addition to independence, the FDA requires that non-promotional, commercially supported education be objective, balanced, and scientifically rigorous. The policy further states that all potential conflicts of interest of the CME staff and faculty be fully disclosed to the program's participants. In addition, Accreditation Council for Continuing Medical Education policy now mandates that the provider adequately manage all identified potential conflicts of interest prior to the program. We, at UCLA, fully endorse the letter and spirit of these concepts.

# Registration Form

## ZOOBIQUITY

Course Number: M134-7 Fall 2013

Fees are as follows:

Early-Bird Registration before September 6, 2013

\$285, Early-Bird Regular

\$140, Early-Bird Students (ID required)

Registration on or after September 6, 2013

\$300, Regular

\$165, Students (ID required)

Tuition includes registration in the program, syllabus, continental breakfast, break, boxed lunch, afternoon portion at the Bronx Zoo (including transportation), and cocktail reception. It also includes free admission into the Bronx Zoo (badge required) and tour of The Animal Medical Center (sign-up required) on Sunday, November 3, 2013. For more information, contact [skwankwan@ucla.edu](mailto:skwankwan@ucla.edu).

Total: \_\_\_\_\_

I will be attending the afternoon portion at the Bronx Zoo.

NOTE: There will be significant walking. Please be sure to wear appropriate attire.

Please print.

\_\_\_\_\_  
Last Four Digits of Social Security Number

\_\_\_\_\_  
Name (First, Last, Degree)

Male  Female

\_\_\_\_\_  
Preferred Mailing Address

\_\_\_\_\_  
City/State/Zip

\_\_\_\_\_  
Phone

\_\_\_\_\_  
Fax

\_\_\_\_\_  
Specialty

\_\_\_\_\_  
E-mail Address

Check enclosed, payable to **Regents of the University of California**

Charge:  MasterCard  Visa  AMEX  Discover

\_\_\_\_\_  
Card Number

\_\_\_\_\_  
Authorizing Signature

\_\_\_\_\_  
Expiration Date

Fax, with credit card number and expiration date, directly to our office at (310) 794-2624

Or

Mail to Office of Continuing Medical Education  
David Geffen School of Medicine at UCLA  
Zoobiquity  
10920 Wilshire Blvd., Ste. 1060  
Los Angeles, CA 90024-6512

UCLA Office of Continuing Medical Education  
David Geffen School of Medicine at UCLA MC-29  
405 Hilgard Avenue  
Box 956938  
Los Angeles, CA 90095-6938

Non-Profit Org.  
US Postage  
PAID  
UCLA

# ZOOBIQUTY<sup>3</sup> CONFERENCE

**A Species Spanning Approach  
to Medicine**

**Saturday, November 2, 2013**

Rockefeller University  
Caspary Auditorium  
and the Bronx Zoo